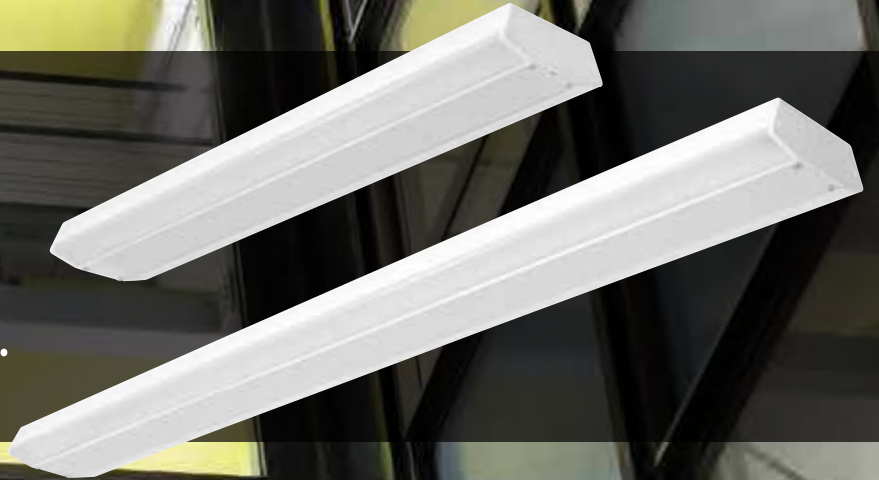




Please visit rabweb.com to see which models are DLC Listed or DLC Premium Listed.

Tread safely.
LED stairwell lights.



RAB[®]
LIGHTING
RABLIGHTING.COM • 888-722-1000

TSLED™ Stairwell Lights



- Available in 2 ft (28W) and 4 ft (36W)
- Diffused lens for smooth light distribution
- 0-10V dimming driver, standard
- Optional ultrasonic motion sensor; more reliable than passive infrared (PIR) which requires a clear line of sight
- Available in 3500K, 4000K and 5000K
- Optional bi-level dimmer drastically increases energy savings by dropping light level up to 75% when stairs are unoccupied
- Emergency battery backup available
- Available with factory-installed Lightcloud™ lighting control system controller
- 100,000-Hour LED lifespan

Ultrasonic Sensor



Ultrasonic Sensor

TSLED is available with an optional motion sensor that works by filling the space with ultrasonic sound waves and detecting changes in wave patterns that indicate movement. This technology is ideal for stairwells and other spaces where lights are required to turn on before people enter a motion sensor's line of sight.

NFPA 101: Life Safety Code®

Section 7.8.1.2.2

Automatic lighting control devices shall be permitted to temporarily turn off the illumination within the means of egress, provided that each lighting control device complies with all of the following:

- (1) In new installations, the lighting control device is listed.
- (2) The lighting control device is equipped to automatically energize the controlled lights upon loss of normal power and is evaluated for this purpose.
- (3) Illumination timers are provided and are set for a minimum 15-minute duration.
- (4) The lighting control device is activated by an occupant movement in the area served by the lighting units.
- (5) In new installations, the lighting control device is activated by activation of the building fire alarm system, if provided.
- (6) The lighting control device does not turn off any lights relied upon for activation of photoluminescent exit signs or path markers.
- (7) The lighting control device does not turn off any battery-equipped emergency luminaires, unit equipment, or exit signs.

Section 7.8.1.3

The floors and other walking surfaces within an exit and within the portion of the exit access and exit discharge...shall be illuminated as follows:

- (1) During conditions of stair use, the minimum illumination for new stairs shall be at least 10 ft-candle (108 lux), measured at the walking surfaces.
- (2) The minimum illumination for floors and other walking surfaces, other than new stairs during conditions of stair use, shall be to values of at least 1 ft-candle (10.8 lux), measured at the floor.
- (3) In assembly occupancies, the illumination of the walking surfaces of exit access shall be at least 0.2 ft-candle (2.2 lux) during periods of performances or projections involving directed light.
- (4) The minimum illumination requirements shall not apply where operations or processes require low lighting levels.

Note: Compliance with NFPA's Life Safety Code is dependent upon the proper installation, programming and scheduling of the lighting control system.

Specifications

UL Listing: Suitable for damp locations

LEDs: Long-life, high-efficiency surface mount LEDs

Driver: Constant current, Class 2, 120-277V, 50/60Hz,

120V: 0.25A, 208V: 0.13A, 240V: 0.12A, 277V: 0.11A, PF >95%

Lifespan: 100,000-hour LED lifespan based on IES LM-80 results and TM-21 calculations

Dimming: 0-10V dimmable driver, standard

Bi-Level Option: 3 setting controls: 25%, 50% or 75%

2 FT (28W)

Color Temperature	5000K	4000K	3500K
Input Watts	29	29	29
Output Lumens	3563	3554	3613
Efficacy (lm/W)	122	122	124
Color Accuracy (CRI)	86	83	83

4 FT (36W)

Color Temperature	5000K	4000K	3500K
Input Watts	37	36	37
Output Lumens	4702	4680	4802
Efficacy (lm/W)	128	130	131
Color Accuracy (CRI)	86	82	83

Housing: Die-formed, 20 gauge, cold-rolled, post-painted steel (white)

Ambient Temperature: Suitable for use in 40°C (104°F) ambient temperatures

Mounting: Surface mount, ceiling or wall. Knockouts on sides and back.

Lens: Soft-glow acrylic lens reduces glare and has smooth and even light distribution

Reflector: High-reflectance white steel

Finish: Our environmentally friendly polyester powder coatings are formulated for high-durability and long-lasting color, and contain no VOC or toxic heavy metals.

Green Technology: LEDs are mercury and UV free

Mounting Options



Ceiling Mount
12' height shown

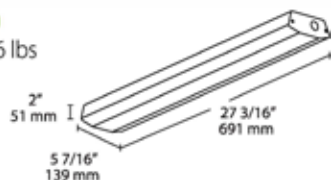


Wall Mount
10' height shown

Dimensions and weight

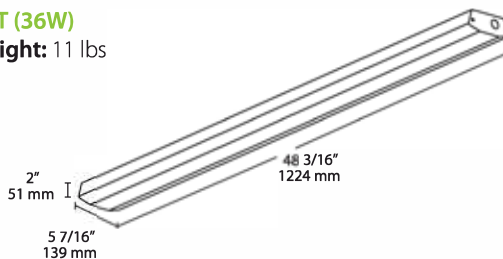
2 FT (28W)

Weight: 6.6 lbs



4 FT (36W)

Weight: 11 lbs



Ordering information

Product Family	Size	Wattage	Color Temperature	Dimming	Options
TSLED	2 — 4	28 — 36	Blank — YN	/D1 0	
	2 ft. — 4 ft.	28W (2 ft) — 36W (4 ft)	5000K — 3500K	0-10V dimming	/LC Lightcloud™ Controller* /US Ultrasonic Sensor /US/BL Ultrasonic Sensor & Bi-Level Operation /E2 Emergency Battery Backup /US/E2 Ultrasonic Sensor & Emergency Battery Backup /US/BL/E2 Ultrasonic Sensor, Bi-Level Operation & Emergency Battery Backup

*Only available as a stand-alone option. May not be combined with sensor, bi-level or emergency options.

TSLED™ available with Lightcloud™

Lightcloud is a commercial wireless lighting control system and service, fully developed and supported by RAB.

- Save up to 68% on energy cost from lighting
- Use your mobile device, tablet or computer for switching and dimming of individual fixtures or entire areas
- Programmable schedules let you illuminate a zone only when needed, automatically adjusting for sunrise and sunset times
- Complimentary rebate assistance and lighting design services



Contact RAB at 888 722-1000 for a quote or visit rablighting.com.

RAB[®]
LIGHTING