

# SLIM17 CCT-Adjustable, Angle-Adjustable Wall Packs **RAB**

SLIM17FA15ADJ / SLIM17FA30ADJ



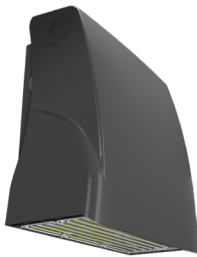
PROJECT: \_\_\_\_\_

DATE: \_\_\_\_\_

TYPE: \_\_\_\_\_

PREPARED BY: \_\_\_\_\_

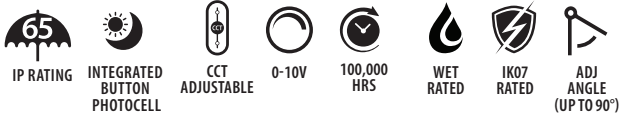
SLIM17FA50ADJ / SLIM17FA80ADJ



## KEY FEATURES

- Angle-adjustable Wall pack, available in two sizes  
SLIM17FA (Small): **15W, 30W**  
SLIM17FA (Medium): **50W, 80W**
- Adjustable CCT: 3000/4000/5000K (Default: 4000K)
- **Adjustable** angle up to 90° in 15° increments
- Comes with integrated button photocell
- 0-10V dimming standard
- IP65 and IK07 rated
- 5-Year, limited warranty

CCT-adjustable wall packs with adjustable angle



## PERFORMANCE

SLIM17FA15ADJ	3000K	4000K	5000K
WATTAGE	15W		
INPUT WATTS	14W	14W	14W
LUMENS	1,761	1,904	1,852
EFFICACY	124	136	130
CRI	70	70	70
VOLTAGE RATING	120-277V		

SLIM17FA30ADJ	3000K	4000K	5000K
WATTAGE	30W		
INPUT WATTS	29W	28W	30W
LUMENS	3,540	3,813	3,768
EFFICACY	121	134	127
CRI	70	70	70
VOLTAGE RATING	120-277V		

SLIM17FA50ADJ	3000K	4000K	5000K
WATTAGE	50W		
INPUT WATTS	48.4W	46.8W	48.2W
LUMENS	7,182	7,477	7,317
EFFICACY	148.4	159.8	151.8
CRI	84	84	83
VOLTAGE RATING	120-277V		

SLIM17FA80ADJ	3000K	4000K	5000K
WATTAGE	80W		
INPUT WATTS	80.6W	78.1W	80.4W
LUMENS	11,682	12,364	12,031
EFFICACY	144.9	158.3	149.6
CRI	84	84	83
VOLTAGE RATING	120-277V		

# SLIM17 CCT-Adjustable, Angle-Adjustable Wall Packs **RAB**

## TECHNICAL SPECIFICATIONS

### COMPLIANCE

#### UL Listed

Suitable for wet locations

#### IK Rating

IK07 rated for protection against impact

#### DLC Listed

This product family is listed with the DesignLights Consortium (DLC). Individual SKUs within this family may carry either a DLC Standard or DLC Premium qualification. Please refer to the individual product specification sheet or the DLC Qualified Products List (QPL) at [designlights.org](http://designlights.org) to confirm the qualification status of a specific SKU prior to specification or purchase.

### LED CHARACTERISTICS

#### LEDS

Long-life, high-efficacy, surface-mount LEDs

### FIELD ADJUSTABLE

Color temperature selectable: 3000/4000/5000K (Default: 4000K)

### CONSTRUCTION

#### Cold Weather Starting

Minimum starting temperature is -40°C (-40°F)

#### Maximum Ambient Temperature

Suitable for use in up to 50°C (122°F)

#### IP Rating

Ingress protection rating of IP65 for dust and water

#### Housing

Precision die-cast aluminum housing

#### Mounting

Hinged wiring access and conduit entries on the back sides, top and bottom make installation a snap

#### Lens

Clear polycarbonate lens

#### Gasket

Silicone

#### Green Technology

Mercury and UV free. RoHs-compliant components.

#### Finish

Formulated for high durability and long lasting color

### ELECTRICAL

#### Drivers

Constant Current, Class 1, 120-277V, 50/60 Hz

15W: 120V: 0.13A, 208V: 0.07A, 240V: 0.06A, 277V: 0.05A

30W: 120V: 0.25A, 208V: 0.20A, 240V: 0.15A, 277V: 0.12A

50W: 120V: 0.51A, 208V: 0.29A, 240V: 0.26A, 277V: 0.22A

80W: 120V: 0.81A, 208V: 0.47A, 240V: 0.41A, 277V: 0.35A

#### Dimming Driver

Driver includes dimming control wiring for 0-10V dimming systems.

Requires separate 0-10V DC dimming circuit. Dims down to 10%.

#### THD @4000K

15W: 6.4% at 120V, 12.4% at 277V

30W: 7.3% at 120V, 15.7% at 277V

50W: 6.2% at 120V, 10.1% at 277V

80W: 10.9% at 120V, 10.4% at 277V

#### Power factor @4000K

15W: 99.4% at 120V, 92.3% at 277V

30W: 99.2% at 120V, 91.9% at 277V

50W: 99.3% at 120V, 94.2% at 277V

80W: 99.4% at 120V, 96.9% at 277V

#### Photocell

120-277V compatible, integrated button photocell included.

#### Surge Protection

L/N-PE: 6KV, L-N: 6KV

### OTHER

#### Warranty

The RAB 5-year, limited warranty covers light output, driver performance and paint finish. RAB's warranty is subject to all terms and conditions found at [rablighting.com/warranty](http://rablighting.com/warranty).

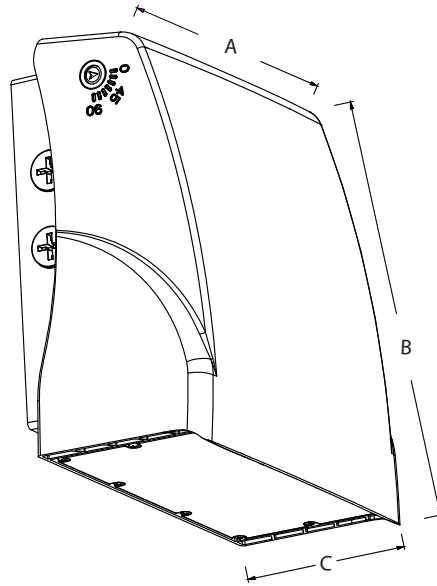
#### Lifespan

100,000-hour LED lifespan based on IES LM-80 results and TM-21 calculations

# SLIM17 CCT-Adjustable, Angle-Adjustable Wall Packs **RAB**

## DIMENSIONS

### SLIM17FA



MODEL#	A	B	C	Weight
SLIM17FA15ADJ	7 1/16"	7 3/8"	4"	3 lbs
SLIM17FA30ADJ	7 1/16"	7 3/8"	4"	3 lbs
SLIM17FA50ADJ	8 3/8"	9 1/8"	4"	4.4 lbs
SLIM17FA80ADJ	8 3/8"	9 1/8"	4"	4.8 lbs

## ORDERING MATRIX

### SLIM17FA

Family	Wattage	Style	Color Temperature	Finish	Driver	Controls	
SLIM17FA		ADJ					
	15 30 50 80	15W 30W 50W 80W	ADJ Angle Adjustable	BLANK 3000/4000/5000K, CCT Adjustable	BLANK Bronze	BLANK 120-277V, 0-10V Dimming	BLANK Button Photocell