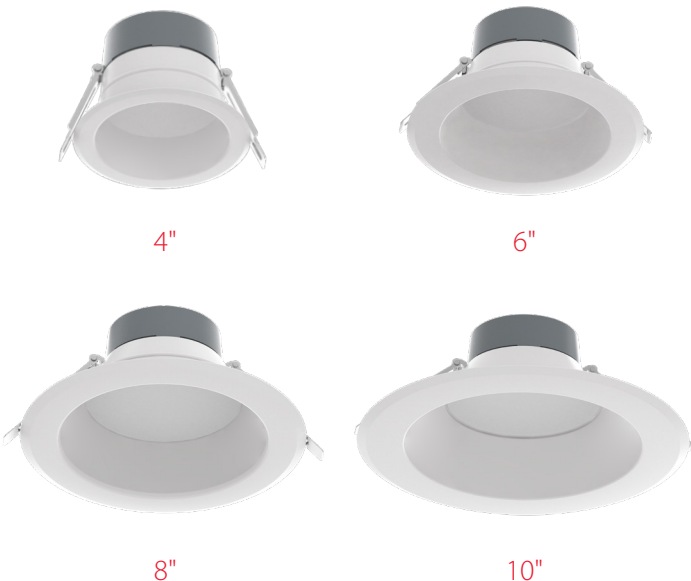


Field-Adjustable Commercial Downlights



PROJECT: _____

DATE: _____

TYPE: _____

PREPARED BY: _____



- ### KEY FEATURES
- Replacement for traditional compact fluorescent recessed downlights
 - Mounts directly into ceiling, **no housing required**
 - Available in multiple sizes: **4", 6", 8" and 10"**
 - Meets **air-tight** requirements
 - **Field-adjustable** "set and forget" color temperature
 - High-performance LEDs for commercial applications
 - Diffuse lens provides soft, smooth light
 - **0-10V dimming** (see *Dimmer Compatibility List*)
 - Suitable for **wet and damp** locations
 - **50,000-Hour** lifespan

Field-Adjustable Power and CCT



PERFORMANCE

Catalog Number	Size	Input Wattage	Lumens*	Efficacy*	Input Voltage	Color Temperature	CRI	Dim Type	L70 Lifespan
CRLEDFA-4R-12S-9CCT-UNV-WS	4"	7/9/12W	600/800/1,000 Lm	86/89/83 Lm/W	120-277V	Field-Adjustable dip switch 3000/3500/4000/5000K	90*	0-10V	50,000
CRLEDFA-6R-16S-9CCT-UNV-WS	6"	9/12/16W	800/1,100/1,500 Lm	89/92/94 Lm/W					
CRLEDFA-6R-24S-9CCT-UNV-WS	6"	15/19/24W	1,200/1,600/2,000 Lm	80/84/83 Lm/W					
CRLEDFA-8R-22S-9CCT-UNV-WS	8"	11/16/22W	1,000/1,500/2,000 Lm	91/94/91 Lm/W					
CRLEDFA-8R-33S-9CCT-UNV-WS	8"	25/29/33W	2,400/2,700/3,000 Lm	96/93/91 Lm/W					
CRLEDFA-10R-43S-9CCT-UNV-WS	10"	32/37/43W	3,000/3,500/4,000 Lm	94/95/93 Lm/W					

*Nominal values

Commercial Downlight 4-inch

CRLEDFA-4R-12S-9CCT-UNV-WS

CCT (K)	3000K			3500K			4000K			5000K		
Input Wattage (W)	7W	9W	12W	7W	9W	12W	7W	9W	12W	7W	9W	12W
Lumens (lm)	600 Lm	800 Lm	1000 Lm	630 Lm	830 Lm	1040 Lm	630 Lm	830 Lm	1040 Lm	620 Lm	820 Lm	1020 Lm
Efficacy (Lm/W)	86 Lm/W	89 Lm/W	83 Lm/W	90 Lm/W	92 Lm/W	87 Lm/W	90 Lm/W	92 Lm/W	87 Lm/W	89 Lm/W	91 Lm/W	85 Lm/W
Equivalency (W)	8W CFL	11W CFL	14W CFL	8W CFL	11W CFL	14W CFL	8W CFL	11W CFL	14W CFL	8W CFL	11W CFL	14W CFL

Field-Adjustable Commercial Downlights



PERFORMANCE (CONT.)

Commercial Downlight 6-inch

CRLEDFA-6R-16S-9CCT-UNV-WS

CCT (K)	3000K			3500K			4000K			5000K		
Input Wattage (W)	9W	12W	16W	9W	12W	16W	9W	12W	16W	9W	12W	16W
Lumens (lm)	872 Lm	1128 Lm	1578 Lm	900 Lm	1170 Lm	1658 Lm	907 Lm	1180 Lm	1677 Lm	904 Lm	1167 Lm	1636 Lm
Efficacy (Lm/W)	105 Lm/W	105 Lm/W	101 Lm/W	109 Lm/W	109 Lm/W	106 Lm/W	110 Lm/W	111 Lm/W	108 Lm/W	110 Lm/W	109 Lm/W	105 Lm/W
Equivalency (W)	16W CFL	18W CFL	32W CFL	16W CFL	18W CFL	32W CFL	16W CFL	18W CFL	32W CFL	16W CFL	18W CFL	32W CFL

CRLEDFA-6R-24S-9CCT-UNV-WS

CCT (K)	3000K			3500K			4000K			5000K		
Input Wattage (W)	15W	19W	24W	15W	19W	24W	15W	19W	24W	15W	19W	24W
Lumens (lm)	1200 Lm	1600 Lm	2000 Lm	1240 Lm	1640 Lm	2060 Lm	1240 Lm	1640 Lm	2060 Lm	1220 Lm	1620 Lm	2030 Lm
Efficacy (Lm/W)	80 Lm/W	84 Lm/W	83 Lm/W	83 Lm/W	86 Lm/W	86 Lm/W	83 Lm/W	86 Lm/W	86 Lm/W	81 Lm/W	85 Lm/W	85 Lm/W
Equivalency (W)	15W CFL	23W CFL	27W CFL	15W CFL	23W CFL	27W CFL	15W CFL	23W CFL	27W CFL	15W CFL	23W CFL	27W CFL

Commercial Downlight 8-inch

CRLEDFA-8R-22S-9CCT-UNV-WS

CCT (K)	3000K			3500K			4000K			5000K		
Input Wattage (W)	11W	16W	22W	11W	16W	22W	11W	16W	22W	11W	16W	22W
Lumens (lm)	1134 Lm	1588 Lm	2154 Lm	1165 Lm	1652 Lm	2260 Lm	1171 Lm	1663 Lm	2277 Lm	1152 Lm	1619 Lm	2183 Lm
Efficacy (Lm/W)	108 Lm/W	104 Lm/W	99 Lm/W	112 Lm/W	109 Lm/W	105 Lm/W	112 Lm/W	110 Lm/W	108 Lm/W	110 Lm/W	107 Lm/W	101 Lm/W
Equivalency (W)	18W CFL	32W CFL	2X26W CFL	18W CFL	32W CFL	2X26W CFL	18W CFL	32W CFL	2X26W CFL	18W CFL	32W CFL	2X26W CFL

CRLEDFA-8R-33S-9CCT-UNV-WS

CCT (K)	3000K			3500K			4000K			5000K		
Input Wattage (W)	25W	29W	33W	25W	29W	33W	25W	29W	33W	25W	29W	33W
Lumens (lm)	2400 Lm	2700 Lm	3000 Lm	2460 Lm	2750 Lm	3080 Lm	2460 Lm	3080 Lm	1040 Lm	2430 Lm	2720 Lm	3040 Lm
Efficacy (Lm/W)	96 Lm/W	93 Lm/W	91 Lm/W	98 Lm/W	95 Lm/W	93 Lm/W	98 Lm/W	95 Lm/W	93 Lm/W	97 Lm/W	94 Lm/W	92 Lm/W
Equivalency (W)	2X17W CFL	2X23W CFL	2X23W CFL	2X17W CFL	2X23W CFL	2X23W CFL	2X17W CFL	2X23W CFL	2X23W CFL	2X17W CFL	2X23W CFL	2X23W CFL

Commercial Downlight 10-inch

CRLEDFA-10R-43S-9CCT-UNV-WS

CCT (K)	3000K			3500K			4000K			5000K		
Input Wattage (W)	32W	37W	43W	32W	37W	43W	32W	37W	43W	32W	37W	43W
Lumens (lm)	3000 Lm	3500 Lm	4000 Lm	3080 Lm	3580 Lm	4100 Lm	3080 Lm	3580 Lm	4100 Lm	3040 Lm	3540 Lm	4050 Lm
Efficacy (Lm/W)	94 Lm/W	95 Lm/W	93 Lm/W	96 Lm/W	97 Lm/W	95 Lm/W	96 Lm/W	97 Lm/W	95 Lm/W	95 Lm/W	96 Lm/W	94 Lm/W
Equivalency (W)	2X23W CFL	11W CFL	14W CFL	2X23W CFL	11W CFL	14W CFL	2X23W CFL	11W CFL	14W CFL	2X23W CFL	11W CFL	14W CFL

TECHNICAL SPECIFICATIONS

CONSTRUCTION

Product Type
Commercial Downlight

Size
4", 6", 8" and 10"

Enclosure Material
Metal

Shape
Round

Finish
White

Trim Style
Smooth

Beam Angle
90° beam angle

Lens
Polycarbonate

INSTALLATION

Mounting
Recessed.

COMPLIANCE

Listing
UL Listed. UL Classified

Environment
Suitable for use in dry, damp, and wet environments.

Air-Tight
Airtight per ASTM-E283-04

IC Rated
Suitable for direct contact with insulation (*12S, 16S, 22S models only*)

Energy Star Approved
This product is ENERGY STAR® Version 2.2 Certified.

DLC Listed
No. There is no product category on the Design Lights Consortium (DLC) Qualified Products List for this product to qualify under.

T20 Compliant
Not compliant

California Title 24 JA8 Compliant
Can be used to conform with the requirements of California Title 24 Part 6

California Energy Commission (CEC) Status
Lawful for Sales in California

NEC Compliant
Suitable for use in closets. Compliant with NEC Sec. 410.16 (A)(1) and 410.16 (C3).

IESNA LM-79 & LM80 Testing
RAB LED luminaires and LED components have been tested by an independent laboratory in accordance with IESNA LM-79 and LM-80.

FCC
Complies with Part 15 of the FCC Rules.

RoHS
Mercury and UV free. RoHS-compliant components.

ELECTRICAL

Dimmable
Yes, 0-10V dims down to 10% (*See Dimmer Compatibility List*)

Dimming Driver
Driver includes dimming control wiring for 0-10V dimming systems. Requires separate 0-10V DC dimming circuit. Dims down to 10%.

THD
≤20%

Power Factor
≥0.9

Input Voltage
120-277V

Operating Frequency
50/60Hz

Operating Temperature
-4°F to 104°F (-20°C to 40°C)

Flicker
≤30%

Emergency Operation*
90 minutes

Battery Recharge Time*
24 hours

Emergency Test Switch*
Integrated emergency test switch

**Select models*

LED CHARACTERISTICS

Color Temperature
Field-Adjustable dip switch 3000/3500/4000/5000K

Color Accuracy (CRI)
>90 CRI

R9 Value
High color performance with R9 greater than or equal to 50

Color Consistency
4-step MacAdam Ellipse binning to achieve consistent fixture-to-fixture color

Color Stability
LED color temperature is warrantied to shift no more than 200K in color temperature over a 5-year period

Color Uniformity
RAB's range of Correlated Color Temperature follows the guidelines of the American National Standard for Specifications for the Chromaticity of Solid State Lighting (SSL) Products, ANSI C78.377-2017.

OTHER

Warranty
RAB warrants that our LED products will be free from defects in materials and workmanship for a period of five (5) years from the date of delivery to the end user, including coverage of light output, color stability, driver performance and fixture finish.

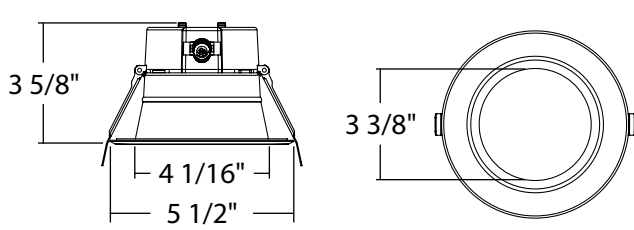
RAB's warranty is subject to all terms and conditions found at rablighting.com/warranty.

Note
All values are typical (tolerance +/- 10%)

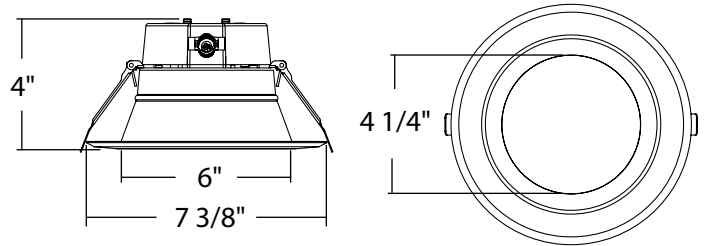
Field-Adjustable Commercial Downlights



DIMENSIONS



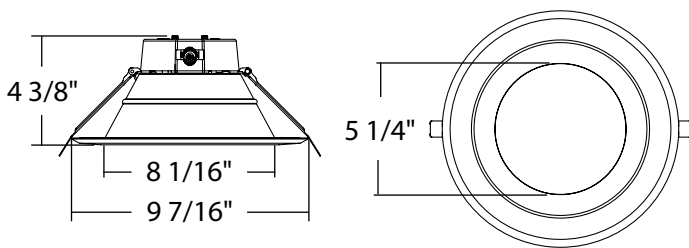
Trim to lens distance is 1 5/16"



Trim to lens distance is 1 1/2"

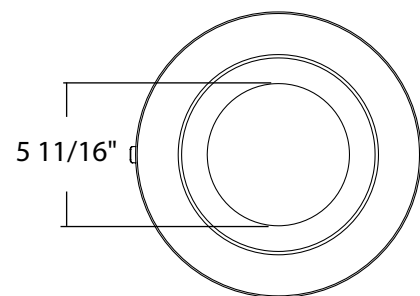
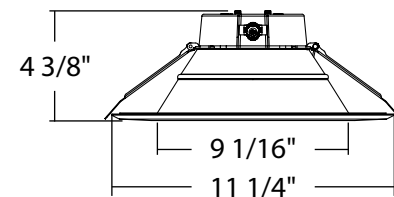
4" Round	Weight
CRLEDFA-4R-12S-9CCT-UNV-WS	0.73 lb

6" Round	Weight
CRLEDFA-6R-16S-9CCT-UNV-WS	1.28 lbs
CRLEDFA-6R-24S-9CCT-UNV-WS	1.28lbs



Trim to lens distance is 1 11/16"

8" Round	Weight
CRLEDFA-8R-22S-9CCT-UNV-WS	1.71 lbs
CRLEDFA-8R-33S-9CCT-UNV-WS	1.71lbs



Trim to lens distance is 1 11/16"

10" Round	Weight
CRLEDFA-10R-43S-9CCT-UNV-WS	2.16 lbs

OPTIONAL ACCESSORIES

4" Trims



4" Round
Brushed Nickel



4" Round
Bronze



4" Round
Black

Catalog Number	UPC	Description
DLTRIM/CRLEDFA4R-BS	192552024051	4" Smooth Black Color Trim
DLTRIM/CRLEDFA4R-BNS	192552024068	4" Smooth Brushed Nickel Color Trim
DLTRIM/CRLEDFA4R-BRS	192552024075	4" Smooth Bronze Color Trim

6" Trims



6" Round
Brushed Nickel



6" Round
Bronze



6" Round
Black

Catalog Number	UPC	Description
DLTRIM/CRLEDFA6R-BS	192552024082	6" Smooth Black Color Trim
DLTRIM/CRLEDFA6R-BNS	192552024099	6" Smooth Brushed Nickel Color Trim
DLTRIM/CRLEDFA6R-BRS	192552024105	6" Smooth Bronze Color Trim

8" Trims



8" Round
Brushed Nickel



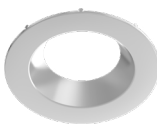
8" Round
Bronze



8" Round
Black

Catalog Number	UPC	Description
DLTRIM/CRLEDFA8R-BS	192552024112	8" Smooth Black Color Trim
DLTRIM/CRLEDFA8R-BNS	192552024129	8" Smooth Brushed Nickel Color Trim
DLTRIM/CRLEDFA8R-BRS	192552024136	8" Smooth Bronze Color Trim

10" Trims



10" Round
Brushed Nickel



10" Round
Bronze



10" Round
Black

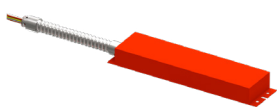
Catalog Number	UPC	Description
DLTRIM/CRLEDFA10R-BS	192552024143	10" Smooth Black Color Trim
DLTRIM/CRLEDFA10R-BNS	192552024150	10" Smooth Brushed Nickel Color Trim
DLTRIM/CRLEDFA10R-BRS	192552024167	10" Smooth Bronze Color Trim

Goof Rings



Catalog Number	UPC	Description
DL4-6GOOF/R/P/CRLEDFA	192552024600	Commercial Downlight 4"-6" Goof Ring
DL6-8GOOF/R/P/CRLEDFA	192552024617	Commercial Downlight 6"-8" Goof Ring
DL8-10GOOF/R/P/CRLEDFA	192552024624	Commercial Downlight 8"-10" Goof Ring
DL8-12GOOF/R/P/CRLEDFA	192552024631	Commercial Downlight 8"-12" Goof Ring
DL10-12GOOF/R/P/CRLEDFA	192552024648	Commercial Downlight 10"-12" Goof Ring

Emergency Backup Driver



DRI-21



DRI-25

Catalog Number	UPC	Description
DRI-21-EMGR-DC-D10	192552028264	Emergency backup driver, only compatible with 12S, 16S, 22S, and 24S models.
DRI-25-EMGR-DC	019813519180	Emergency backup driver, compatible with all models.

Field-Adjustable Commercial Downlights

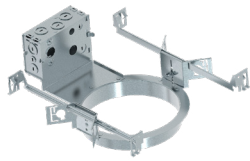


OPTIONAL ACCESSORIES (CONT.)

Mounting Frames (Rough Ins)



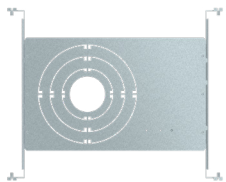
6" Round



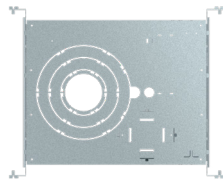
8" Round

Catalog Number	UPC	Description
DLFRAME/C6R	192552000697	Commercial DL Frame 6"
DLFRAME/C8R	192552000703	Commercial DL Frame 8"

Mounting Plate w/ nailer bar



DLPLATE/WFR3468/NB



DLPLATE/C3468R/NB

Catalog Number	UPC	Description
DLPLATE/WFR3468/NB	192552000673	Mounting plate with nailer bar for 4" and 6"
DLPLATE/C3468R/NB	192552000680	Mounting plate with nailer bar for 6", 8" and 10"

ORDERING INFO

Catalog Number	Model Number	UPC	Case Pack
CRLEDFA-4R-12S-9CCT-UNV-WS	DLC0054(CRLEDFA-4R-12S-9CCT-UNV-WS)	192552013857	4
CRLEDFA-6R-16S-9CCT-UNV-WS	DLC1001(CRLEDFA-6R-16S-9CCT-UNV-WS)	192552026901	4
CRLEDFA-6R-24S-9CCT-UNV-WS	DLC0055(CRLEDFA-6R-24S-9CCT-UNV-WS)	192552013864	4
CRLEDFA-8R-22S-9CCT-UNV-WS	DLC1002(CRLEDFA-8R-22S-9CCT-UNV-WS)	192552026918	4
CRLEDFA-8R-33S-9CCT-UNV-WS	DLC0056(CRLEDFA-8R-33S-9CCT-UNV-WS)	192552013871	4
CRLEDFA-10R-43S-9CCT-UNV-WS	DLC0057(CRLEDFA-10R-43S-9CCT-UNV-WS)	192552013888	4

ORDERING MATRIX

Family	Size	Shape	Wattage	CRI/Color Temp	Voltage	Finish	Trim	Emergency
CRLEDFA	-	R	-	9CCT	-	UNV	-	W S
	4	4" R Round	12S 7/9/12W (4" only)	9CCT >90CRI	UNV 120V-277V	W White S Smooth	Blank	No Option
	6	6"	16S 9/12/16W (6" only)	Field-Adjustable	0-10V Dimming		/E	Emergency
	8	8"	22S 11/16/22W (8" only)	3000/3500/4000/5000K				Battery Backup
	10	10"	24S 15/19/24W (6" only)					
			33S 25/29/33W (8" only)					
			43S 32/37/43W (10" only)					

Note: Emergency Battery Backup only available on 16S and 22S