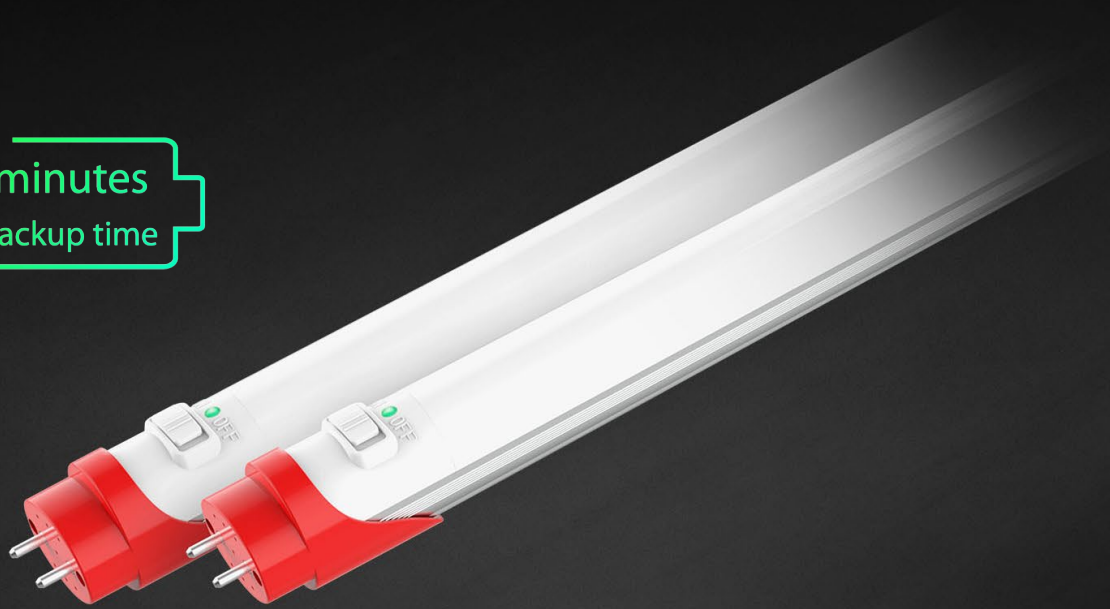


90 minutes
battery backup time



The all-in-one T10.

General and emergency lighting all in one lamp.

RAB®

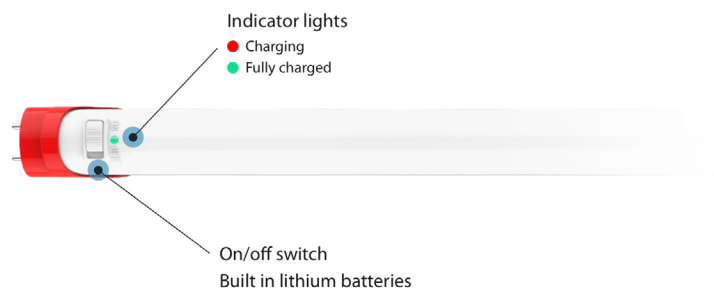


Two SKUs in one.

RAB's T10EM tube is designed and engineered as an all-in-one, general purpose lighting and battery-powered emergency backup LED solution. The tube can be switched on as a normal lamp, providing high lumen efficacy and supporting on/off switching operation. The integrated batteries and emergency driver provide a minimum of 90 minutes of light.

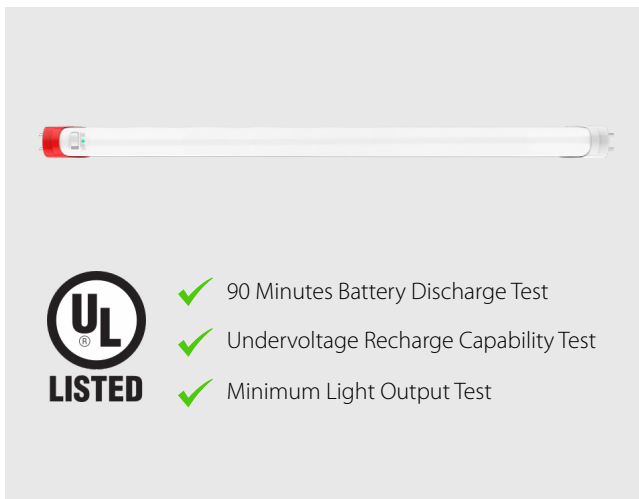
What's under the hood...

- 17W / 2,100 lumens
- Replaces 32W fluorescent T8
- G13 Pin base
- TRIAC/ELV dimming
- Lithium battery provides 3W (400 lumens)
- Battery feature can be turned off





RAB's warranty is subject to all terms and conditions found at rablighting.com/warranty



- ✓ 90 Minutes Battery Discharge Test
- ✓ Undervoltage Recharge Capability Test
- ✓ Minimum Light Output Test



Available in 3 different CCTs

The T10EM is offered in 3500K, 4000K, or 5000K models, making them suitable for use in a wide variety of applications: buildings, schools, hospitality, multi-family apartments, hallways, corridors, low bay warehouses, and stairwells.



Classroom



Office



Stairwell

Designed to perform, built to last.

The T10EM tube is constructed of rugged, shatterproof thermoplastic with a nano-polycarbonate design that provides superior light distribution and eliminates discoloration and deformities.

Accessory Kit

For added convenience, don't forget the accessory kit, which includes (2) non-shunted lamp holders, (2) wire caps, and (1) test switch to make routine emergency testing easy.

T10EM-ACC KIT



1 x Emergency test switch



2 x Lamp holders



2 x P3 Wiring orange caps

Ordering Matrix

| Product Family | Wattage | Length | Material | CRI/Color Temp | Wiring Method | Installation Type |
|----------------|---------|--------|----------|-------------------|--------------------|------------------------|
| T10EM | 17 | 48 | P | | SE | BYP |
| | 17W | 4FT | Plastic | 850 840 835 | SE Single Ended | Type B, Ballast Bypass |