



# Lightcloud Blue | Accessories

Adding features to your Lightcloud Blue site is easy with these various devices.

## Line Voltage Controller

Turn any 0-10V LED fixture into a Lightcloud Blue-enabled luminaire with a Lightcloud Blue Controller. It's easily attached to a 1/2" knockout on the fixture or a j-box, or can simply be factory-installed onto your favorite compatible RAB fixture. The Controller's button can also be used to identify the device within the app, to turn the fixture on/off, and to set dimming level.

**LCBLUECONTROL/W** 

**Voltage:** 120 - 277V

---

**Load Ratings:**  
LED/Fluorescent/Incandescent -  
120V: 400W; 277V: 400W

---

**IP Rating:** IP20

---

**Environment:** Indoor



**LCBLUECONTROL/B** 

**Voltage:** 120 - 277V

---

**Load Ratings:**  
ED/Fluorescent/Incandescent -  
120V: 400W; 277V: 400W

---

**IP Rating:** IP66

---

**Environment:** Indoor/Outdoor



# Phase Dimmer

## XDIM/LCB

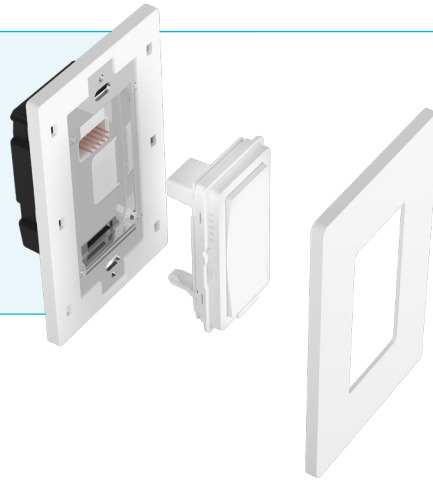
Voltage: 120V

Load Ratings:

LED/CFL: 300W;

INC/HAL/ELV: 500W; MLV: 400VA

Power Monitoring: Yes, neutral reqd.



The Lightcloud Blue Phase Dimmer can be used to control standard, wired lighting or wirelessly control Lightcloud Blue-enabled lighting—no Gateway or Hub required. Includes selectable phase switch (forward, reverse, auto-detect) and interchangeable paddle for easy future upgrades.

# Remote Plate Adapter & Remote Pedestal

Designed for use with the Remote, the Plate Adapter easily secures your Remote to the wall while the portable Pedestal can be utilized anywhere as a decorative stand for your Remote. The Pedestal seats the Remote at a comfortable angle and features a non-slip bottom for secure operation.



PLATE KIT/W/LCB



PEDESTAL/W/LCB



# High Bay Emergency Driver

With the Lightcloud Blue-enabled emergency driver, testing can now be completed in minutes using a Bluetooth Mesh wireless network. With the Lightcloud Blue mobile app, users can manually conduct monthly and annual tests as well as export testing reports.

## EMHB30/LCB; EMHB30B/LCB

Battery Type: Lithium-Ion

Input Wattage: 12W Max

Output Power Max: 30W

Input Voltage: 100-347V



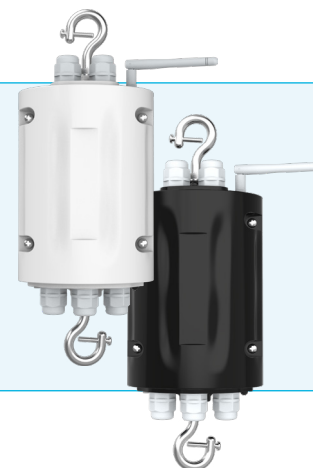
## EMHB60/LCB; EMHB60B/LCB

Battery Type: Lithium-Ion

Input Wattage: 12W Max

Output Power Max: 60W

Input Voltage: 100-347V



# 5-Pin Plug-In Controllers

These Controllers add Lightcloud Blue compatibility to HID replacement lamps with integrated 5-pin sensor ports. In addition to the standard Controller, models are also available with a PIR or MVS sensor that includes daylight sensing. When connected to select field-adjustable HID replacement lamps, the controller allows for CCT tuning from the Lightcloud Blue app.



## CONTROL/W/AUX/5SP/LCBS/MVS

Voltage: 12VDC

Connection Type: 5-pin

Mounting Height: 39 ft

Detection Area: 32 ft. dia.

Daylight Sensing: Yes

IP Rating: IP20



## CONTROL/W/AUX/5SP/LCB

Voltage: 12VDC

Connection Type: 5-pin

IP Rating: IP20



## CONTROL/W/AUX/5SP/LCBS

Voltage: 12VDC

Connection Type: 5-pin

Mounting Height: 39 ft

Detection Area: 32 ft. dia.

Daylight Sensing: Yes

IP Rating: IP20

# Nano

## NANO/LCB



Voltage: 5V

Amps: 500mA

Connectivity: USB-A

*Must be connected to a 2.4GHz Wi-Fi network*

Dimensions: 1 3/8"H x 1 1/16"L x 1 1/16"W

Weight: 0.07 lbs



The Nano expands Lightcloud Blue's capabilities to include compatibility with Amazon® Alexa or Google® Nest and because the Nano connects to Network Time Protocol (NTP) via your Wi-Fi, timekeeping and schedules become more accurate. If power is lost and restored, the Nano automatically reconnects to Wi-Fi and immediately sends the current time to all devices so that all Schedules and SmartShift continue without the user having to open the app.

# Remote

The Lightcloud Blue Remote provides a truly wireless control of Lightcloud Blue-enabled lights. Simultaneously control hundreds of lights to adjust on/off, dim level, and color temperature\*, and set two programmable buttons for up to 6 custom scenes.



## LCBLUEREMOTE/W



Voltage: 3V

Amps: 10mA

Battery Type: CR2032

Battery Life: 2 years

Dimensions: 2 5/8"H x 1 5/16"L x 3/8"W

Weight: 0.21 lbs

\*Remote can only adjust CCT on tunable white lamps and fixtures.

# Standalone Ceiling Sensor

These standalone ceiling occupancy sensors can be combined with any Lightcloud Blue-enabled lights. Once paired, the sensor can be programmed for Occupancy or Vacancy, set timeouts, sensitivity levels, specify actions and create daylight zones.



## LCLCSENSE/SH

Voltage: 12VDC\*  
Connection Type: RJ09  
Mounting Height: 9 ft  
Detection Area: 30 ft. dia.

Daylight Sensing: Yes  
IP Rating: IP66  
Environment: Indoor/Outdoor



\*Requires Lightcloud Blue Controller



## PIRW40/LCB

Voltage: 120-277V  
Connection Type: Hardwired  
Mounting Height: 39 ft  
Detection Area: 20 ft. dia.

Daylight Sensing: Yes  
IP Rating: IP66  
Environment: Indoor/Outdoor



## MVSW50/LCB

Voltage: 120-277V  
Connection Type: Hardwired  
Mounting Height: 49 ft  
Detection Area: 20 ft. dia.

Daylight Sensing: Yes  
IP Rating: IP66  
Environment: Indoor/Outdoor



# Wireless Occupancy Sensor

The Wireless Occupancy Sensor is a battery-operated motion detector that can be placed anywhere—no wiring required! Its passive infrared technology is ideal for small movement detection and is best suited for smaller, open areas. With a base that can rotate up to 150°, it is easy to maximize your detection area.



## SENSE/PIR/W/LCB

Mounting Height: 9 ft  
Detection Area: 20 ft diameter  
Detection Angle: 120° - 150°  
Daylight Sensing: No  
Battery Type: Lithium CR2  
Battery Life: 3 years  
Environment: Indoor



# Low-Voltage Controllers/Sensors

These sensors/controllers are designed for use with compatible 0-10V fixtures with 12VDC power output. Easily screws into RAB fixtures with a sensor port or use the RAAS accessory to attach it to a 1/2" knockout on the fixture. Available with either a PIR or MVS sensor, and ideal for fixtures mounted as high as 50 feet.



## PIR40/LCB



Voltage: 12VDC

Connection Type: 3-pin pogo

Mounting Height: 39 ft

Detection Area: 20 ft. dia.

Technology: Passive Infrared

Daylight Sensing: Yes

IP Rating: IP66

Environment:  
Indoor/Outdoor



## MVS50/LCB



Voltage: 12VDC

Connection Type: 3-pin pogo

Mounting Height: 49 ft

Detection Area: 20 ft. dia.

Technology: Microwave

Daylight Sensing: Yes

IP Rating: IP66

Environment:  
Indoor/Outdoor



## PIR40B/LCB



Voltage: 12VDC

Connection Type: 3-pin pogo

Mounting Height: 39 ft

Detection Area: 20 ft. dia.

Daylight Sensing: Yes

IP Rating: IP66

Environment: Indoor/Outdoor



## MVS50B/LCB



Voltage: 12VDC

Connection Type: 3-pin pogo

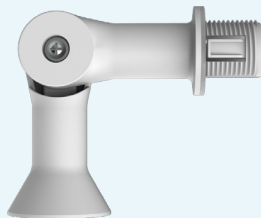
Mounting Height: 49 ft

Detection Area: 20 ft. dia.

Daylight Sensing: Yes

IP Rating: IP66

Environment: Indoor/Outdoor



## RAAS



Voltage: 12VDC

Connection Type: Hardwired

Mounting: 1/2" knockout



## RAASB



Voltage: 12VDC

Connection Type: Hardwired

Mounting: 1/2" knockout

[rablighting.com](http://rablighting.com)

1 (844) - LIGHTCLOUD