

Performance Test Report

Report No.: 20092110-P0

Client information:		
Name	RAB Lighting Inc	
Address	Northvale, New Jersey 07647 USA	
Reception Date	2019-07-31	
Test Date	2019-07-31	
Sample description:		
Sample Type	Self-ballasted LED lamp	
Type/Model	HID-26-E26-850-BYP-TS	
Test Voltage/Frequency	120V/60Hz	
Sample Quantities.	6	
Sample No.	001~006	
Test standard:		
According to IES LM-79-08		
Remarks of this test:		
/		
Description of measurement uncertainty:		
/		
Test case verdicts:		
Test case does not apply to the test object.....:	N/A	
Test item does meet the requirement.....:	P	
Test item does not meet the requirement.....:	F	
General test result: see test result		
Prepared by /Date		
Reviewed by /Date		
Approved by/Date		

This test report can't be reproduced except in full, without written approval of the laboratory.
And this test report only to the items tested.

1. Performance Test Result

1.1 Photometric Measurements at 25°C - Integrating Sphere Method

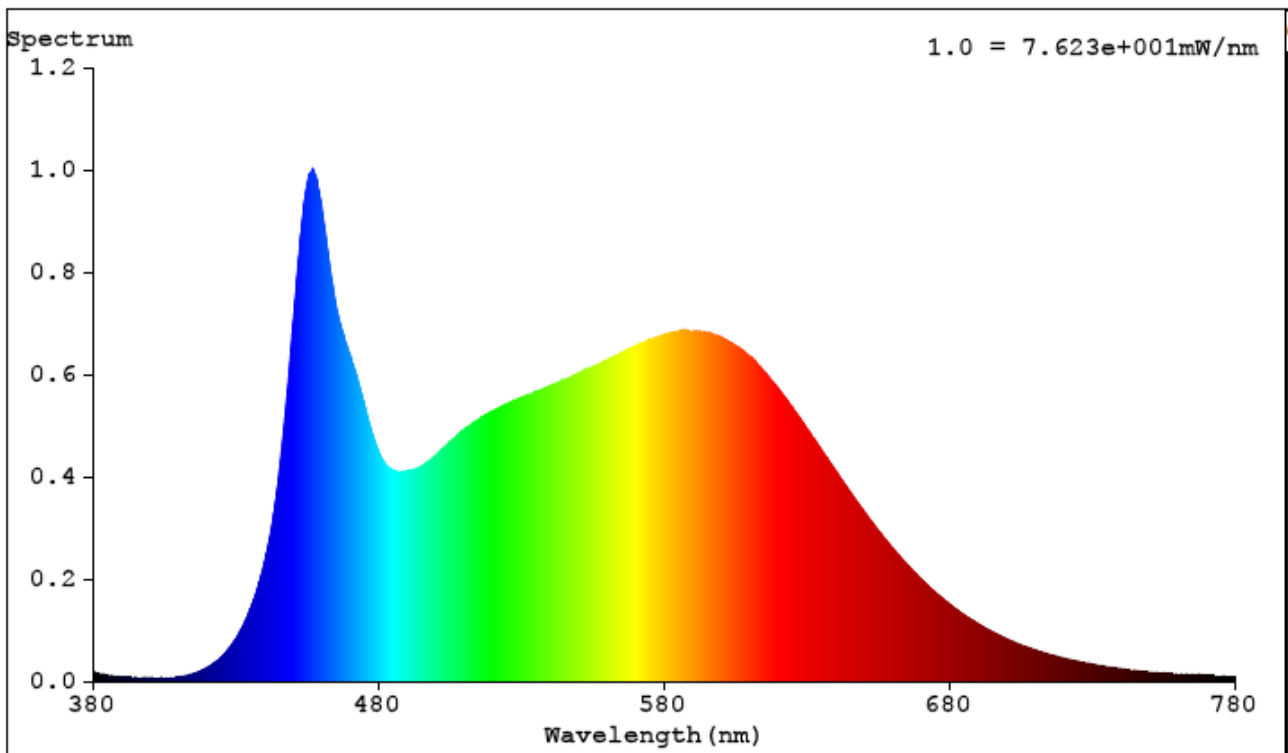
Sample No.	Base orientation	Input Voltage (Vac)	Input Current (mA)	Input Power (W)	Input Power Factor	Absolute Luminous Flux (lm)	Lumen Efficacy (lm/W)
001	Base up	120.0	209.20	24.94	0.993	3395.3	136.16
002	Base up	120.0	213.00	25.40	0.994	3465.1	136.42
003	Base up	120.0	210.20	25.06	0.994	3438.3	137.20
004	Base down	120.0	212.40	25.32	0.993	3471.3	137.11
005	Base down	120.0	209.00	24.91	0.993	3478.9	135.64
006	Base down	120.0	212.20	25.29	0.993	3406.2	134.67
Average		120.0	211.00	25.15	0.993	3425.9	136.20

Sample No.	Base orientation	Correlated Color Temperature (K)	CRI	CIE 1931 Chromaticity Coordinate		CIE 1976 Chromaticity Coordinate		Radiant Flux (W)	Ambient Temp (°C)	Rf	Rg
				x	y	u'	v'				
001	Base up	4865	85.1	0.3499	0.3622	0.2106	0.4905	10.686	25.6	84	92
002	Base up	4879	85.0	0.3494	0.3620	0.2104	0.4903	10.901	25.5	84	92
003	Base up	4881	85.1	0.3493	0.3613	0.2105	0.4899	10.832	25.7	84	92
004	Base down	4860	85.0	0.3500	0.3623	0.2106	0.4905	10.910	25.1	84	92
005	Base down	4877	85.0	0.3495	0.3620	0.2104	0.4903	10.630	25.2	84	92
006	Base down	4867	85.0	0.3498	0.3621	0.2105	0.904	10.712	25.3	84	92
Average		4872	85.0	0.3496	0.3620	0.2105	0.4903	10.779	25.4	84	92

This test report can't be reproduced except in full, without written approval of the laboratory.
And this test report only to the items tested.

1.2 Test data

1.2.1 Spectral Power Distribution (sample No.:001)



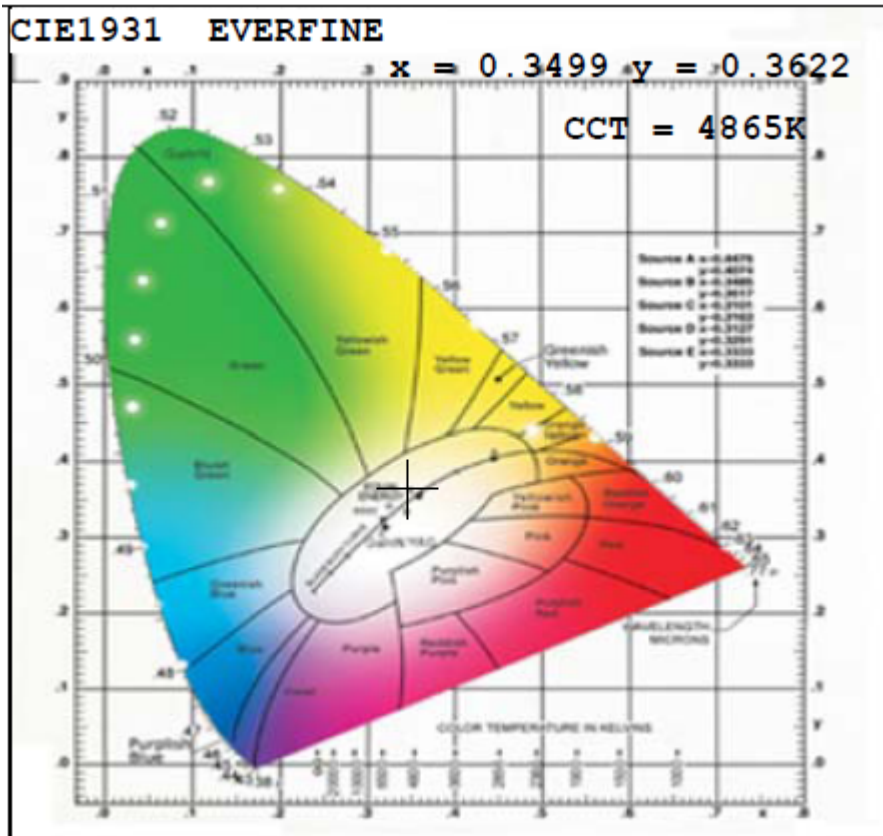
This test report can't be reproduced except in full, without written approval of the laboratory.
And this test report only to the items tested.

1.2.2 Tabulated Spectral Power Distribution (sample No.:001)

WL (nm)	Relative Spectral	Absolute Spectral (mW/nm)	WL (nm)	Relative Spectral	Absolute Spectral (mW/nm)
380	0.0194	1.476	585	0.6838	52.12
385	0.0125	0.9503	590	0.6838	52.13
390	0.0098	0.7501	595	0.6817	51.97
395	0.008	0.612	600	0.6732	51.32
400	0.0074	0.5668	605	0.6566	50.05
405	0.0075	0.5734	610	0.6348	48.39
410	0.0092	0.7035	615	0.6054	46.15
415	0.0149	1.136	620	0.5716	43.58
420	0.0272	2.074	625	0.5348	40.77
425	0.0476	3.626	630	0.4939	37.65
430	0.0826	6.298	635	0.453	34.53
435	0.1393	10.62	640	0.4118	31.39
440	0.2313	17.63	645	0.3712	28.29
445	0.3966	30.23	650	0.3321	25.32
450	0.6935	52.86	655	0.2949	22.48
455	0.9713	74.04	660	0.2607	19.88
460	0.9324	71.08	665	0.2288	17.44
465	0.7377	56.23	670	0.2	15.25
470	0.6365	48.52	675	0.1742	13.28
475	0.5405	41.2	680	0.1509	11.51
480	0.4485	34.19	685	0.1306	9.957
485	0.4125	31.44	690	0.1128	8.596
490	0.4112	31.35	695	0.0968	7.376
495	0.4205	32.05	700	0.0832	6.34
500	0.441	33.62	705	0.0713	5.436
505	0.4675	35.64	710	0.0615	4.688
510	0.492	37.51	715	0.0528	4.028
515	0.5117	39.01	720	0.0455	3.467
520	0.528	40.25	725	0.0393	2.998
525	0.5427	41.37	730	0.0338	2.573
530	0.5552	42.32	735	0.029	2.212
535	0.5666	43.19	740	0.0249	1.898
540	0.5769	43.98	745	0.0215	1.636
545	0.5893	44.92	750	0.0188	1.433
550	0.6024	45.92	755	0.0167	1.27
555	0.6143	46.83	760	0.0151	1.154
560	0.6278	47.86	765	0.0138	1.054
565	0.6421	48.95	770	0.0126	0.9617
570	0.6552	49.94	775	0.0121	0.9229
575	0.6675	50.88	780	0.0117	0.8943
580	0.6777	51.66			

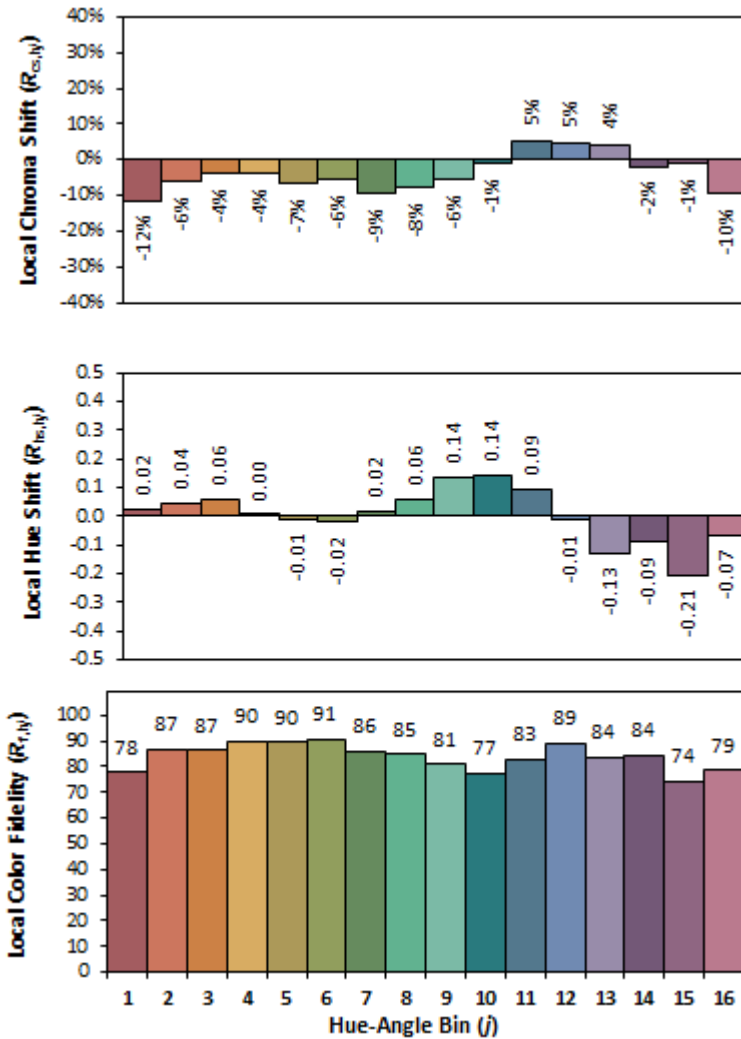
This test report can't be reproduced except in full, without written approval of the laboratory.
And this test report only to the items tested.

1.2.3 CIE Chromaticity Diagram (sample No.:001)



This test report can't be reproduced except in full, without written approval of the laboratory.
And this test report only to the items tested.

1.2.4 The TM-30 value for Color Rendition by Hue-angle bin



1.3 CONCLUSION

The results tabulated in this report are representative of the actual test samples submitted for this report only. The data is provided to the client for further evaluation. Compliance to the referenced specification requirements was not determined in this report.

This test report can't be reproduced except in full, without written approval of the laboratory.
And this test report only to the items tested.

ANNEX 1 PICTURE



Fig.1 View of sample

-----END-----

This test report can't be reproduced except in full, without written approval of the laboratory.
And this test report only to the items tested.