

Welcome



Lightcloud®

LED Linear T8 Tube
Ballast Compatible

LCBT8-14-48P-8TW-DIR-SS

WE'RE HERE TO HELP:

1(844) LIGHTCLOUD

1(844) 544-4825

Hello

Lightcloud Blue is a Bluetooth mesh wireless lighting control system that allows you to control RAB's various compatible devices. With RAB's patent-pending Rapid Provisioning technology, devices can be quickly and easily commissioned for residential and large commercial applications using the Lightcloud Blue mobile app. Each device in a system can communicate with any other device, eliminating the need for a Gateway or Hub and maximizing the control system's reach.

Product Features

Direct Connect LED, No Gateway or Hub required

Works on existing fluorescent ballasts

Wireless control from your mobile device

On/off and dimming

Color tuning

Wireless remote control

Create custom scenes

Lived-in look vacation mode

Sensor compatible

Schedules and automations

SmartShift™ automated circadian schedule

Catalog Number:

LCBT8-14-48P-8TW-DIR-SS

Model Number:

LCBT8-14-48P-8TW-DIR-SS

Electrical:

18W, 2200lm

120-277Vac

50/60Hz

Construction:

Lamp Base: G13

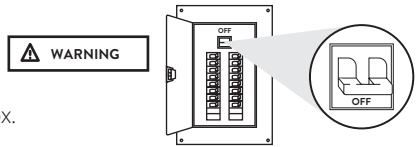
Safety Information

- Not suitable for use with dimmers and sensors unless specifically designed for RAB Lightcloud Blue Devices.
- Risk of shock. Disconnect power before installation.
- LED linear T8 lamp for use only with products described and installed in accordance with product specifications. LED linear T8 lamp to be operated with fluorescent electronic ballast.
- Risk of fire, use only in place of fluorescent lamps specified on label. Risk of electric shock-do not use where directly exposed to water, suitable for damp locations
- For the compatible ballast list, please refer to RAB's website - rablighting.com.
- Check the lamp before installation, if there is any damage caused during transportation, do not install.
- Maintenance should be carried out by technical personnel only.
- Keep the lamp away from flame or high temperature objects.
- Not for use in wet locations, e.g. bathroom or outdoors.
- Do not use with standard dimmers and emergency ballasts.
- Do not install this lamp in a pre-heat luminaire.
- This lamp only operates on electronic ballasts. If lamp does not light when the luminaire is energized, remove lamp from luminaire and contact lamp manufacturer or qualified electrician.
- Caution risk of fire - if the lamp or luminaire exhibits undesirable operation (buzzing, flickering,etc.), immediately turn off power, remove lamp from luminaire and contact manufacturer.
- This device is not intended for use with emergency exits.
- Do not place this device on hot surfaces.
- For safety reasons, do not open device, which will also void the warranty.
- Only use this lamp in a socket rated for this lamp.

Installing your Lightcloud Blue Lamp

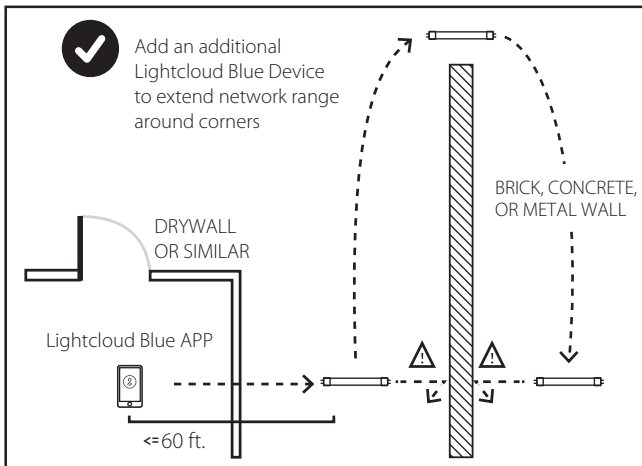
① Turn off power

- Place the wall switch in the off position.
- Turn off the main power at the breaker panel or remove the fuse from the fuse box.



①a Find a suitable location

- Lightcloud Blue devices should be positioned within 60 ft. of each other.
- Building materials such as brick, concrete and steel construction may require additional Lightcloud Blue devices to extend around an obstruction.

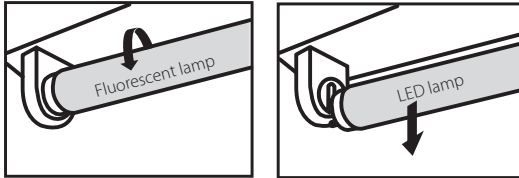


Installing your Lightcloud Blue Lamp *(Cont'd)*

② Remove lens or diffuser *(if applicable)*

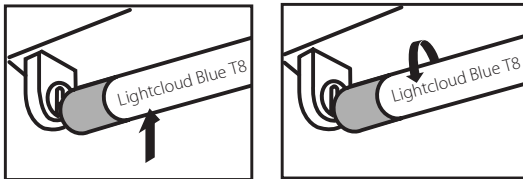
③ Remove existing fluorescent lamps from the luminaire. *(Fig.1)*

Fig: 1



④ Bring LED lamp to luminaire and insert lamp pins into luminaire lamp holders. Rotate LED lamp until lamp locks in place. Ensure that the LED lamp front points away from the back of the luminaire. *(Fig.2)*

Fig: 2



⑤ Place lens or diffuser back in place. *(if applicable)*

Controlling your Lightcloud Blue Device

- 1 Confirm your device is connected and powered on.
- 2 Download the Lightcloud Blue app from the Apple® App Store or Google® Play store.



- 3 Launch the App and create an account. 

- 4 Tap the "add device" icon in the app to start connecting devices.



- 5 Follow the remaining steps in the app. Create areas, groups, and scenes to organize and control your devices.
- 6 You're all set!

Setting Device to Pairing Mode

If your Lightcloud Blue lamp is already paired, you can reset it by using the below methods.

Method 1: Delete from App

Open the app and access the device settings for the paired device. Be sure that the lamp is online and select "Delete".

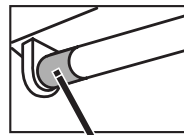
Method 2: Manual

Power the lamp off and on 5 times consecutively. Do not allow less than 5 seconds to elapse from switch off to switch on, do not allow more than 2 seconds to elapse from switch on to off. The lamp will flash 3 times, then reset to 100% brightness at default CCT.



Method 3: Rapid Reset Tool

The rapid reset process must be done by professional electricians qualified by RAB. Reach out to your RAB sales manager to request a Rapid Reset Tool. The tool simply needs to be placed directly on the small Lightcloud logo on downlight for 2 seconds. The downlight will flash 3 times, then reset to 100% brightness at default CCT.



Care and Cleaning

- To clean the device, first disconnect the power to the device by turning off the circuit breaker or by removing the fuse at the fuse box.
- Use a dry or slightly dampened, clean cloth with water only to wipe the surface of the light.
- Allow the device to dry completely before restoring power.

Emergency default

If communication is lost, the Lightcloud Blue lamps may fall back to a specific state, such as turning the attached Lightcloud Blue lamps on.

[Warning: Any wires not in use must be capped off or otherwise insulated.]

Compliance Information

FCC Information:

This light device has been tested and found to comply with the limits for Consumer RF Lighting device, pursuant to Part 18 of the FCC Rules. These limits are designed to provide reasonable protection against harmful interference in a residential installation. This equipment generates, uses and can radiate radio frequency energy and, if not installed and used in accordance with the instructions, may cause harmful interference to radio communications. However, there is no guarantee that interference will not occur in a particular installation.

This product may cause interference to radio equipment and should not be installed near maritime safety communications equipment or other critical navigation or communication equipment operating between 0.45 – 30MHz.

To comply with the FCC's RF exposure limits for general population / uncontrolled exposure, this transmitter must be installed to provide a separation distance of at least 20 cm from all persons and must not be co-located or operating in conjunction with any other antenna or transmitter.

CAUTION: Changes or modifications to this equipment not expressly approved by RAB Lighting may void the user's authority to operate this equipment.

WE'RE HERE TO HELP:

1 (844) LIGHTCLOUD

1 (844) 544-4825

support@lightcloud.com



Lightcloud®

Lightcloud Blue is a Bluetooth mesh wireless lighting control system that allows you to control RAB's various compatible devices. With RAB's patent-pending Rapid Provisioning technology, devices can be quickly and easily commissioned for residential and large commercial applications using the Lightcloud Blue mobile app. Each device in a system can communicate with any other device, eliminating the need for a Gateway or Hub and maximizing the control system's reach.

Learn more at www.rablighting.com

1(844) LIGHTCLOUD

1(844) 544-4825

RAB®

©2022 RAB LIGHTING Inc.

Made in China

Pat. rablighting.com/ip