

HAZPAN Panel, Hazardous Locations

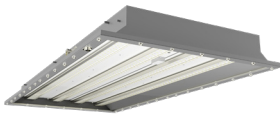
HAZPAN2X2



HAZPAN1X4



HAZPAN2X4



HAZPAN Panel, Hazardous Locations



0-10V



100,000
HOURS



IP RATING



WET
RATED

PROJECT:

DATE:

TYPE:

PREPARED BY:



KEY FEATURES

- Available in following sizes and selectable wattages:
2'X2': 40/60W
1'X4': 40/60W
2'X4': 60/80W
- Available CCT: 5000K
- Voltage rating 120-277V
- Pendant mount kit and ceiling mount kits included. Recessed mounting kit sold separately
- Designed to perform in the areas with hazardous vapor and gases
- Battery backup and microwave occupancy sensor options available. Hazardous location microwave sensor & sensor kit accessories available.
- IP66 rated
- Certified for Class 1, Division 2 (Group A, B, C, D)
- Temperature rating of T5 or T6 (chain and ceiling mount)
- UL Listed for wet location
- 5-Year, no-compromise warranty

TECHNICAL SPECIFICATIONS

COMPLIANCE

UL Listed

Suitable for wet locations. Certified to UL standard 1598 and 844

DLC Listed

This product is on the Design Lights Consortium (DLC) Qualified Products List and is eligible for rebates from DLC Member Utilities. Designed to meet DLC 5.1 requirements.

CATALOG#	DLC ID	CATALOG#	DLC ID
HAZPAN2X2-40	S-WRBVM9	HAZPAN2X2-60	S-LQTSSV
HAZPAN1X4-40	S-27BNZW	HAZPAN1X4-60	S-V1BMF7
HAZPAN2X4-60	S-JX3VXW	HAZPAN2X4-80	S-6Y3704

Hazardous Location Classifications:

Class 1, Division 2(Group A,B,C,D)

Class 1 (Hazardous Material in Surrounding

Atmosphere):Flammable vapors or gases may be present

Division 2 (Presence of Hazardous Materials):

Ignitable concentrations of hazards exist only under

accidental system breakdowns or abnormal

operating conditions

Groups A, B, C, D (Hazardous Material in Surrounding Atmosphere):

A = Acetylene

B = Hydrogen, butadiene, ethylene oxide, propylene oxide and acrolein

C = Ethylene, cyclopropane and ethyl ether

D = Acetone, ammonia, benzene, butane, ethanol,

gasoline, hexane, methane, methanol, naphta,

natural gas, propane & toluene

IP Listing

Ingress Protection rating of IP66 for dust and water

CONSTRUCTION

Cold Weather Starting

The minimum starting temperature is -40°C (-40°F)

Maximum Ambient Temperature

Suitable for use in up to 50°C (122°F)

Cold Weather Starting for Battery Backup

The minimum starting temperature is 0°C (32°F)

Maximum Ambient Temperature for Battery Backup

Suitable for use in up to 70°C (158°F)

Mounting

All models come standard with ceiling mount and pendant mount kits.

Recessed mount kit will be sold as an accessory.

Housing

Sheet metal

Lens

Polycarbonate

Gasket

Silicone

IP Rating

Ingress protection rating of IP66 for dust and water

Green Technology

Mercury and UV free. RoHS-compliant components.

Finish

Formulated for high durability and long lasting color

HAZPAN Panel, Hazardous Locations

TECHNICAL SPECIFICATIONS

LED CHARACTERISTICS

LEDs

Long-life, high-efficacy, discrete, surface-mount LEDs

Color Consistency

7-step MacAdam Ellipse binning to achieve consistent fixture-to-fixture color

Color Uniformity

RAB's range of Correlated Color Temperature follows the guidelines of the American National Standard for Specifications for the Chromaticity of Solid State Lighting (SSL) Products, ANSI C78.377-2017.

ELECTRICAL

Drivers:

Constant Current, Class 2, 120-277V, 50/60 Hz

HAZPAN2X2

40W: 120V: 0.34A, 208V: 0.19A, 240V: 0.17A, 277V: 0.16A

60W: 120V: 0.50A, 208V: 0.29A, 240V: 0.25A, 277V: 0.24A

HAZPAN1X4

40W: 120V: 0.33A, 208V: 0.19A, 240V: 0.17A, 277V: 0.16A

60W: 120V: 0.50A, 208V: 0.29A, 240V: 0.25A, 277V: 0.24A

HAZPAN2X4

60W: 120V: 0.50A, 208V: 0.29A, 240V: 0.25A, 277V: 0.24A

80W: 120V: 0.67A, 208V: 0.39A, 240V: 0.33A, 277V: 0.30A

Dimming Driver:

Driver includes dimming control wiring for 0-10V dimming systems.

Requires separate 0-10V DC dimming circuit. Dims down to 10%.

THD / Power Factor:

MODEL#	THD	POWER FACTOR	THD	POWER FACTOR
HAZPAN2X2-40	4.2%	99.5%	14.4%	90.3%
HAZPAN2X2-60	2.3%	99.7%	8.2%	90.8%
HAZPAN1X4-40	5.6%	99.5%	16.8%	90.4%
HAZPAN1X4-60	2.7%	99.6%	8.9%	90.4%
HAZPAN2X4-60	2.9%	99.7%	8.4%	90.7%
HAZPAN2X4-80	2.6%	99.9%	12.0%	94.4%
INPUT VOLTAGE	120V		277V	

Battery Backup:

Battery backup will operate the LED Lamp for 90 minutes if power falls.

Wired for 120-277V.

Surge Protection

L/N-PE: 10kV, L-N: 6kV

Note: All values are typical (tolerance +/- 10%)

Temperature Ratings:

MODEL#	AMBIENT TEMPERATURE	T-CODE
HAZPAN2X2-40	-40°C to 40°C	T6
	-40°C to 56°C	T6
	-40°C to 66°C	T5
HAZPAN2X2-60	-40°C to 40°C	T6
	-40°C to 56°C	T5
	-40°C to 66°C	T5

ELECTRICAL

Temperature Ratings (Continued)

MODEL#	AMBIENT TEMPERATURE	T-CODE
HAZPAN1X4-40	-40°C to 40°C	T6
	-40°C to 56°C	T6
	-40°C to 66°C	T6
HAZPAN1X4-60	-40°C to 40°C	T6
	-40°C to 56°C	T5
HAZPAN2X4-60	-40°C to 40°C	T6
	-40°C to 56°C	T6
HAZPAN2X4-80	-40°C to 40°C	T6

MICROWAVE OCCUPANCY SENSOR (OPTIONAL)

- 12VDC Input, IC Solution
- On/off control
- Operating Voltage: 10-15V
- Detection Area: 25%/50%/75%/100%
- Microwave Frequency: 5.8GHz ± 75MHz
- Hold Time: 5 sec/30 sec/1 min/10 min/20 min/30 min
- Microwave Power: <0.3mW
- Switching Capacity: <40mA
- Daylight Threshold: 2Lux/10Lux/30Lux/50Lux/80Lux/120Lux/Disable
- Mounting Height: 2.5 - 4.5 m/8.2 - 14.76 ft
- Operating Current: < 30mA
- Stand-by Period: 0 sec/10 sec/30 sec/1 min/5 min/10 min/+∞
- Detection Range: 3 - 7 m/ 9.84 - 22.96 Ft
- Control Method: 0-10V
- Stand-by Dimming Level: 10%/20%/30%/50%
- Detection Angle: 360° (Ceiling Mounted)
- Operating Temperature: -35°C to 70°C
- Factory Default Setting:
- Detection area 100%
- Hold time 5sec
- Daylight threshold Disable
- Stand-by period 0 sec
- Stand-by dimming level 10%.

PERFORMANCE

Lifespan:

100,000-Hour LED lifespan based on IES LM-80 results and TM-21 calculations

OTHER

Warranty

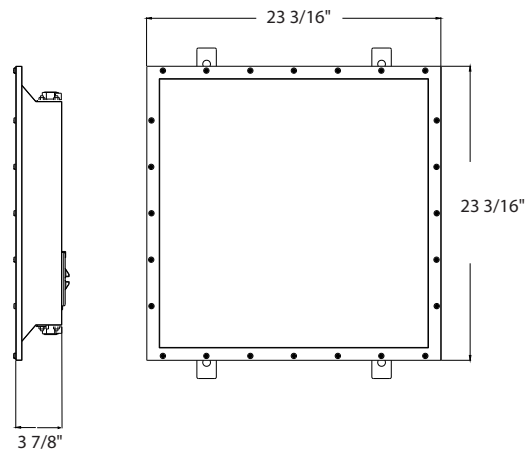
The RAB 5-year, no-compromise warranty covers light output, color stability, driver performance, paint finish and labor. RAB's warranty is subject to all terms and conditions found at rablighting.com/warranty.

HAZPAN Panel, Hazardous Locations

DIMENSIONS

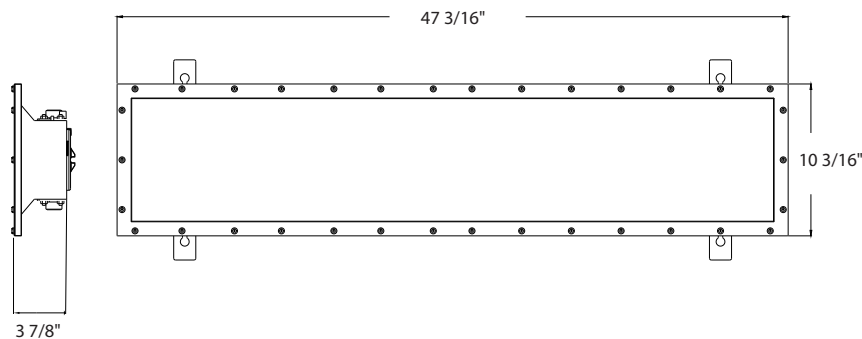
HAZPAN2X2

Weight: 35.93 lbs



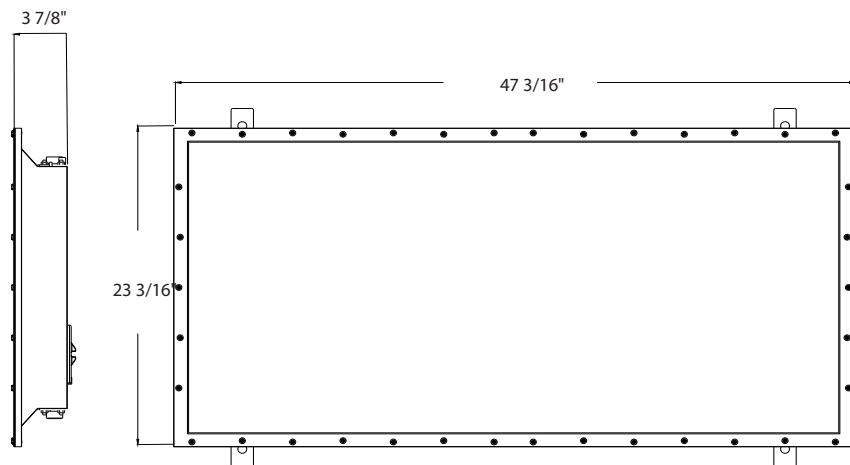
HAZPAN1X4

Weight: 29.98 lbs



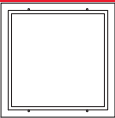
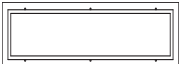

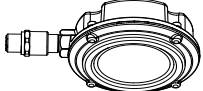
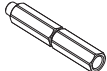
HAZPAN2X4

Weight: 53.35 lbs



HAZPAN Panel, Hazardous Locations

ACCESSORIES

IMAGE	SKU#	UPC	DESCRIPTION	WEIGHT
	HAZPANRM2X2	192552038171	RECESSED MOUNT KIT FOR HAZPAN2X2 MODELS	11.9 lbs
	HAZPANRM1X4	192552038164	RECESSED MOUNT KIT FOR HAZPAN1X4 MODELS	14.6 lbs
	HAZPANRM2X4	192552038188	RECESSED MOUNT KIT FOR HAZPAN2X4 MODELS	19.0 lbs
	HAZMVS		MVS SENSOR MAX 10M HEIGHT IP66 HAZ LOCATION	1.76 lbs
	HAZMVS-KIT		EXTENSION KIT FOR HAZMVS HAZARDOUS LOCATION	1.76 lbs

PERFORMANCE

MODEL#	HAZPAN2X2-40	HAZPAN2X2-60	HAZPAN1X4-40	HAZPAN1X4-60	HAZPAN2X4-60	HAZPAN2X4-60
CCT	5000K	5000K	5000K	5000K	5000K	5000K
WATTAGE	40W	60W	40W	60W	60W	80W
INPUT WATTS	40.2W	60.2W	40.1W	60.0W	60.2W	80.2W
LUMENS	5,985	8,834	5,885	8,701	9,247	12,479
EFFICACY (LM/W)	148.9	146.7	146.8	145.0	153.6	155.6
CRI	85	84	84	84	85	85
VOLTAGE RATINGS	120-277V					

ORDERING MATRIX

HAZPAN

Family	Size		Wattage	Color Temp	Finish	Mount	Voltage	Options						
HAZPAN		-												
	2X2 2 ft X 2 ft		40	40W*	BLANK	5000K	BLANK	Gray	BLANK	Pendant / Ceiling Mount	BLANK	120-277V, 0-10V Dimming	BLANK /MVS	No Option
	1X4 1 ft X 4 ft		60	60W**										Microwave Occupancy Sensor (Internal)
	2X4 2 ft X 4 ft		80	80W***									/E	Battery Backup

* Available in 2 ft x 2 ft and 1 ft x 4 ft models

** Available in all models

*** Available in 2 ft x 4 ft models only