



4" 12W



6" 18W

## Field adjustable LED downlight module



PROJECT: \_\_\_\_\_

DATE: \_\_\_\_\_

TYPE: \_\_\_\_\_

PREPARED BY: \_\_\_\_\_



### KEY FEATURES

- Available in multiple sizes: **4" and 6"**
- Made with **anti-UV plastic** to prevent discoloration from prolonged sun exposure
- **Field-adjustable** "set and forget" color temperature
- Dimmable on TRIAC and **0-10V down to 10%**
- Ideal for both indoor and outdoor application in **dry, damp,** or **wet** environments
- **50,000-Hour** lifespan

### PERFORMANCE

Catalog Number	Size	Input Wattage	Equivalency	Input Voltage	Color Temperature	CRI	L70 Lifespan
HA4	4"	12W	14W CFL	120V or 120-277V*	5CCT adjustable 2700/3000/3500/4000/5000K	90+	50,000
HA6	6"	18W	26W CFL				

\*For 120-277V applications, order with HAD4/D10, HAD6/D10. Sold separately.

#### HA4 + White round/square smooth/baffle trim

CCT	Lumens	Efficacy
2700K	1000 lm	83 Lm/W
3000K	1030 lm	86 Lm/W
3500K	1060 lm	88 Lm/W
4000K	1060 lm	88 Lm/W
5000K	1060 lm	88 Lm/W

#### HA4 + Brushed nickel round/square smooth trim

CCT	Lumens	Efficacy
2700K	980 lm	82 Lm/W
3000K	1000 lm	83 Lm/W
3500K	1020 lm	85 Lm/W
4000K	1020 lm	85 Lm/W
5000K	1020 lm	85 Lm/W

## PERFORMANCE (CONT.)

### HA4 + Bronze round/square smooth trim

CCT	Lumens	Efficacy
2700K	950 lm	79 Lm/W
3000K	980 lm	82 Lm/W
3500K	1000 lm	83 Lm/W
4000K	1000 lm	83 Lm/W
5000K	1000 lm	83 Lm/W

### HA4 + Black round/square smooth trim

CCT	Lumens	Efficacy
2700K	950 lm	79 Lm/W
3000K	980 lm	82 Lm/W
3500K	1000 lm	83 Lm/W
4000K	1000 lm	83 Lm/W
5000K	1000 lm	83 Lm/W

### HA6 + White round/square smooth/baffle trim

CCT	Lumens	Efficacy
2700K	1700 lm	94 Lm/W
3000K	1750 lm	97 Lm/W
3500K	1800 lm	100 Lm/W
4000K	1800 lm	100 Lm/W
5000K	1800 lm	100 Lm/W

### HA6 + Brushed nickel round/square smooth trim

CCT	Lumens	Efficacy
2700K	1650 lm	92 Lm/W
3000K	1700 lm	94 Lm/W
3500K	1750 lm	97 Lm/W
4000K	1750 lm	97 Lm/W
5000K	1750 lm	97 Lm/W

### HA6 + Bronze round/square smooth trim

CCT	Lumens	Efficacy
2700K	1600 lm	89 Lm/W
3000K	1650 lm	92 Lm/W
3500K	1700 lm	94 Lm/W
4000K	1700 lm	94 Lm/W
5000K	1700 lm	94 Lm/W

### HA6 + Black round/square smooth trim

CCT	Lumens	Efficacy
2700K	1600 lm	89 Lm/W
3000K	1650 lm	92 Lm/W
3500K	1700 lm	94 Lm/W
4000K	1700 lm	94 Lm/W
5000K	1700 lm	94 Lm/W

## TECHNICAL SPECIFICATIONS

### CONSTRUCTION

#### Housing Material

Metal

#### Fixture Shape

Round

#### Fixture Finish

Black and White

#### LEDs

Long-life with a 90+ CRI value, high lumen output, CCT selectable COB LED

#### Beam Angle

45° narrow beam angle

#### Gaskets

Gasket creates airtight and watertight seal with no need for additional caulking.

#### Lens

Precision-engineered polystyrene diffuser provides high uniformity and reduced glare. No visible diodes, hot spots or shadows.

#### Controls

Dip switch mounted on j-box for CCT selection

## TECHNICAL SPECIFICATIONS (CONT.)

### INSTALLATION

#### Mounting

Adjustable, spring-loaded tabs are compatible with ceilings up to 1 1/2" thick.

### ELECTRICAL

#### THD

≤20%

#### Power Factor

0.9

#### Input Voltage

120V or 120-277V\*

#### Operating Frequency

60Hz

#### Operating Temperature

-4°F to 104°F (-20°C to 40°C)

#### Dimming

Yes, see Dimmer Compatibility List

#### Note

All values are typical (tolerance +/- 10%)

\*For 120-277V applications, order with HAD4/D10, HAD6/D10. Sold separately.

### COMPLIANCE

#### Safety Listing

UL Listed

#### Environment Rating

Wet location

#### FCC

Complies with Part 15 of the FCC Rules.

#### RoHS

Mercury and UV free. RoHS-compliant components.

### OTHER

#### Warranty

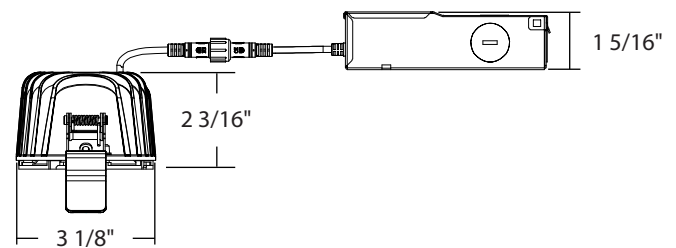
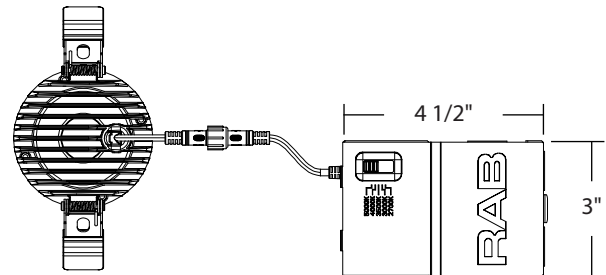
RAB warrants that our LED products will be free from defects in materials and workmanship for a period of five (5) years from the date of delivery to the end user, including coverage of light output, color stability, driver performance and fixture finish.

RAB's warranty is subject to all terms and conditions found at [rablighting.com/warranty](http://rablighting.com/warranty).

## DIMENSIONS

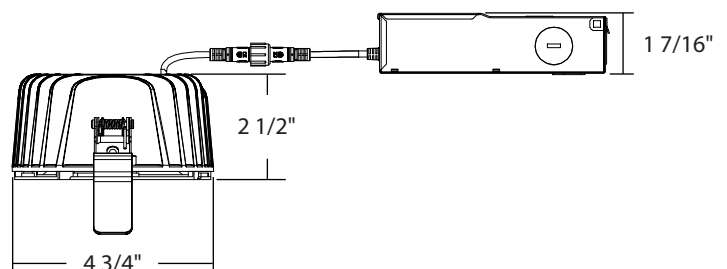
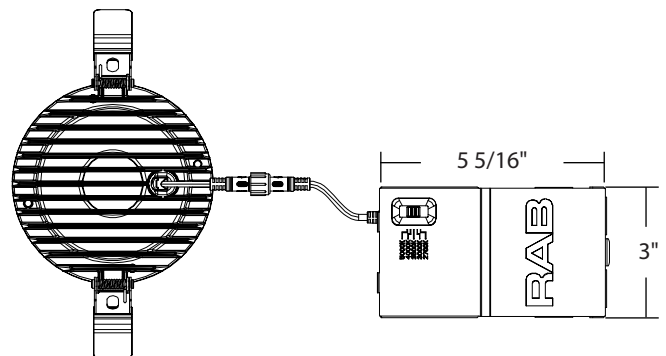
4" Round - 12W

Weight: 0.45lb



6" Round - 18W

Weight: 1.18lb

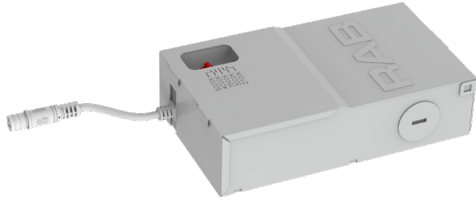


# Downlight Module



## ACCESSORIES

Driver (sold separately)



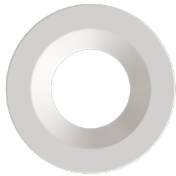
HAD4/D10



HAD6/D10

Catalog Number	UPC	Description	Packaging
HAD4/D10	192552025379	Driver for 4" Round module, 120-277V, 0-10V + Triac	1
HAD6/D10	192552024761	Driver for 6" Round module, 120-277V, 0-10V + Triac	1

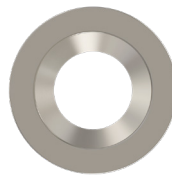
4" Trims (sold separately)



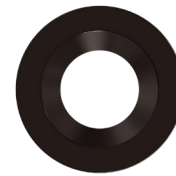
HAT4RW  
smooth white



HAT4RB  
smooth black



HAT4RBN  
smooth brushed nickel



HAT4RA  
smooth bronze



HAT4RBW  
baffle white

Catalog Number	UPC	Description	Packaging
HAT4RW	192552024778	Round smooth white trim for 4" module	1
HAT4RB	192552024785	Round smooth black trim for 4" module	1
HAT4RBN	192552024792	Round smooth brushed nickel trim for 4" module	1
HAT4RA	192552024808	Round smooth bronze trim for 4" module	1
HAT4RBW	192552024815	Round baffle white trim for 4" module	1



HAT4SW  
smooth white



HAT4SB  
smooth black



HAT4SBN  
smooth brushed nickel



HAT4SA  
smooth bronze

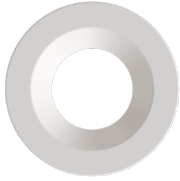


HAT4SBW  
baffle white

Catalog Number	UPC	Description	Packaging
HAT4SW	192552024822	Square smooth white trim for 4" module	1
HAT4SB	192552024839	Square smooth black trim for 4" module	1
HAT4SBN	192552024846	Square smooth brushed nickel trim for 4" module	1
HAT4SA	192552024853	Square smooth bronze trim for 4" module	1
HAT4SBW	192552024860	Square baffle white trim for 4" module	1

## ACCESSORIES (CONT.)

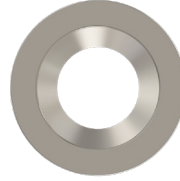
### 6" Trims (sold separately)



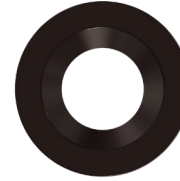
HAT6RW  
smooth white



HAT6RB  
smooth black



HAT6RBN  
smooth brushed nickel



HAT6RA  
smooth bronze



HAT6RBW  
baffle white

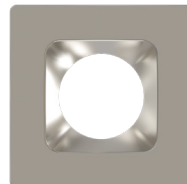
Catalog Number	UPC	Description	Packaging
HAT6RW	192552024877	Round smooth white trim for 6" module	1
HAT6RB	192552024884	Round smooth black trim for 6" module	1
HAT6RBN	192552024891	Round smooth brushed nickel trim for 6" module	1
HAT6RA	192552024907	Round smooth bronze trim for 6" module	1
HAT6RBW	192552024914	Round baffle white trim for 6" module	1



HAT6SW  
smooth white



HAT6SB  
smooth black



HAT6SBN  
smooth brushed nickel



HAT6SA  
smooth bronze

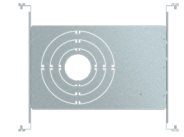


HAT6SBW  
baffle white

Catalog Number	UPC	Description	Packaging
HAT6SW	192552024921	Square smooth white trim for 6" module	1
HAT6SB	192552024938	Square smooth black trim for 6" module	1
HAT6SBN	192552024945	Square smooth brushed nickel trim for 6" module	1
HAT6SA	192552024952	Square smooth bronze trim for 6" module	1
HAT6SBW	192552024969	Square baffle white trim for 6" module	1

## ACCESSORIES (CONT.)

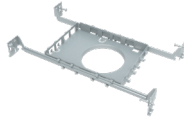
### Mounting Plates



DLPLATE/WFR3468/NB



DLPLATE/WFR3456



DLPLATE/WFR4/NB/CL



DLPLATE/WFR6/NB/CL

Catalog Number	UPC	Description
DLPLATE/WFR3468/NB	0192552000673	MOUNTING PLATE WITH NAILER BAR FOR WAFER 3/4/6/8IN
DLPLATE/WFR3456	0192552025584	DL ECO MOUNTING PLATE GREY FOR WAFER 3"/4"5"6"
DLPLATE/WFR4/NB/CL	0192552036993	MOUNTING PLATE FOR WAFER 4" W/ DRYWALL COLLAR & EXTENSION BAR
DLPLATE/WFR6/NB/CL	0192552037006	MOUNTING PLATE FOR WAFER 6" W/ DRYWALL COLLAR & EXTENSION BAR

### Extension Cables



Catalog Number	UPC	Description
EXTCBL-FA-6	019813908502	EXT CABLE FOR WAFER FA 6 FOOT
EXTCBL-FA-12	019813908519	EXT CABLE FOR WAFER FA 12 FEET
EXTCBL-FA-20	019813908526	EXT CABLE FOR WAFER FA 20 FEET

### Emergency Drivers



DRI-25-EMGR-DC



DRI-21-EMGR-DC-D10

Catalog Number	UPC	Description
DRI-25-EMGR-DC	019813519180	EM DRIVER 100-277V 8WINPUT OUTPUT 25W 170VDC
DRI-21-EMGR-DC-D10	0192552028264	EM DRIVER 100-277V 21W-300W 0-10V DIM

## ORDERING INFO

Catalog Number	Model Number (Energy Star)	UPC	Case Pack
HA4	DLM001(HA4)	192552024730	4
HA6	DLM002(HA6)	192552024747	4

## ORDERING MATRIX

### DOWNLIGHT MODULE

Family	Size	Shape	CRI/Color Temperature	Voltage/Dimming
<b>HA</b>				
	6 6", 18W 4 4", 12W	Blank Round	Blank 90 CRI; Field Adjustable	Blank 120V, TRIAC

\* Module and trim must be order together for proper installation.

### TRIMS

Family	Size	Shape	Trim	Finish
<b>HAT</b>				
	6 6" 4 4"	R Round S Square	Blank Smooth B Baffle	W White B Black A Bronze BN Brushed Nickel